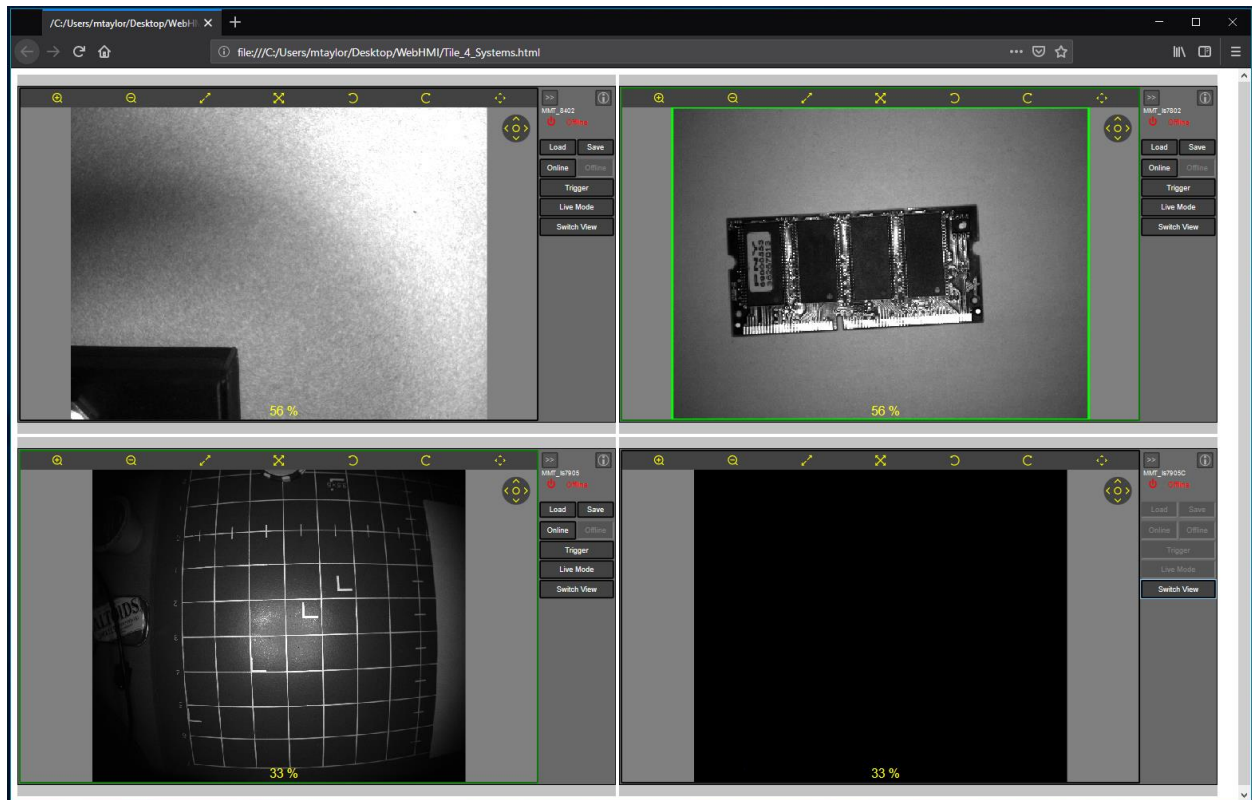


In-Sight Integration Note: How To Tile HTTP WebHMI



Contents

| | | |
|----------|--------------------------------|----------|
| 1 | Overview..... | 3 |
| 2 | Technical Details | 3 |
| 2.1 | Create HTML Document: | 3 |
| 2.2 | Load page at boot time: | 4 |

1 Overview

The purpose of this document is to outline the steps needed to tile multiple unsecured WebHMI's in one browser window. This tiled view only works for vision systems that are not configured for secured http (https), as secured mode does not allow for redirection. This approach will allow for multiple vision systems to be monitored in one browser tab.

Users will be able to push buttons and interact with each vision system. Unlike tiled mode in VisionView, selecting a vision system that is tiled in the browser will not resize the view to fill the screen for better viewing. Unlike VisionView, all tiled WebHMI's will update in real time and allow for their controls to be used.

2 Technical Details

This section will show how to create a simple html document to redirect webpages from individual vision systems to one collective page, followed by instructions on how to have a PC load this page at boot time. Note, the individual views will be displayed in the order they are listed in the document, justified to the upper right of the display.

2.1 Create HTML Document:

1. Open notepad and copy/paste the html below:

```
<!DOCTYPE html>
```

```
<html>
```

```
<body>
```

```
<embed src="http://192.168.1.30:8087/" style="width:500px; height: 300px;">
```

```
<embed src="http://192.168.1.247:8087/" style="width:500px; height: 300px;">
```

```
<embed src="http://192.168.1.30:8087/" style="width:500px; height: 300px;">
```

```
<embed src="http://192.168.1.247:8087/" style="width:500px; height: 300px;">
```

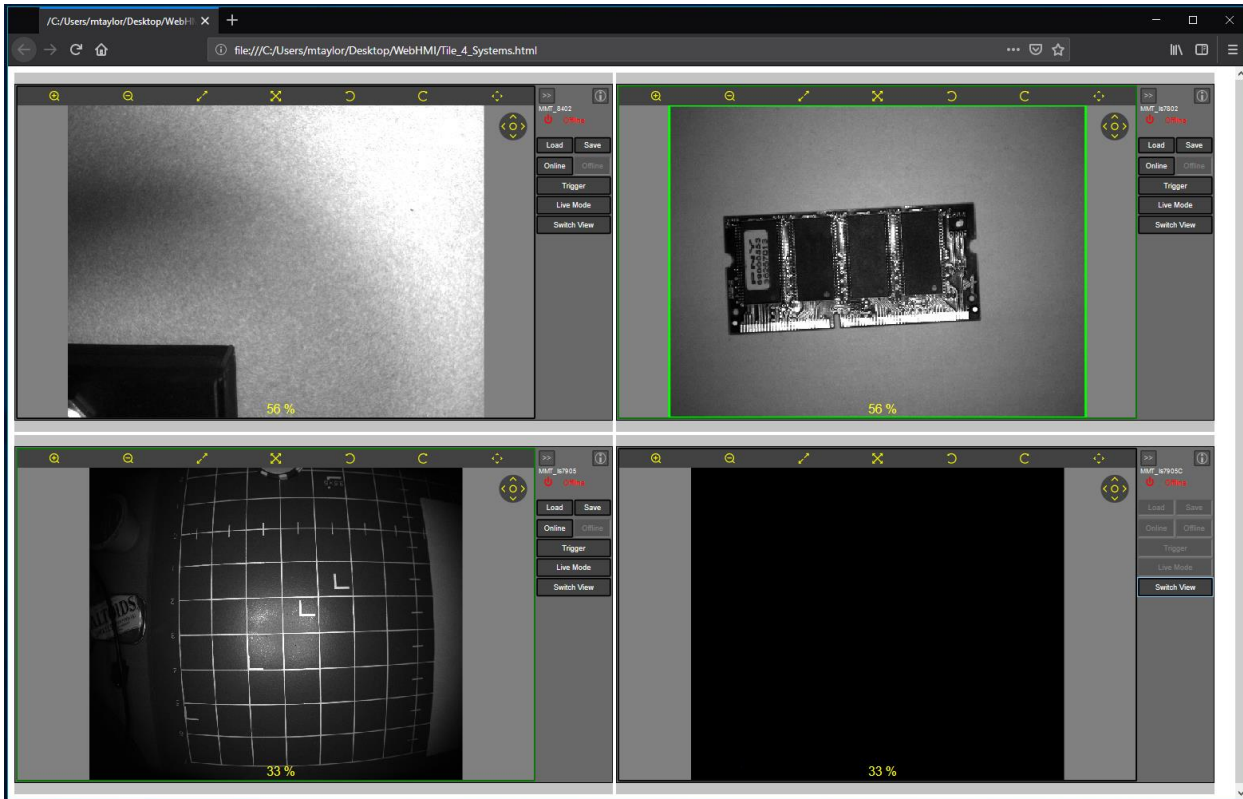
```
</body>
```

```
</html>
```

2. Change the [IP addresses](#) to those of the vision systems being used.
3. Add or remove lines as needed to reflect the number of vision systems being used.

In-Sight Integration Note: How To Tile HTTP WebHMI's

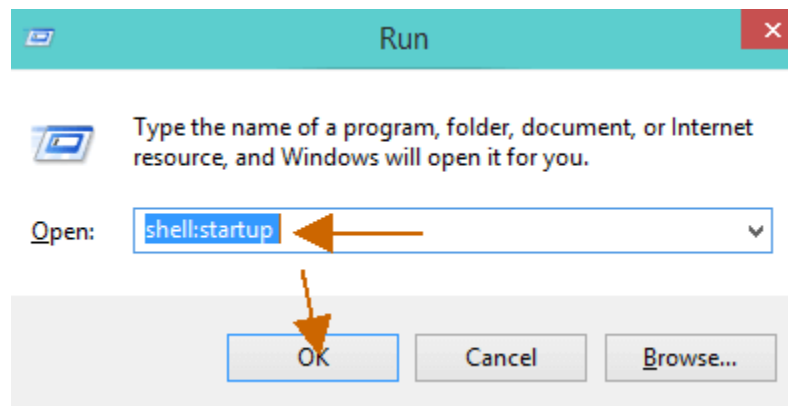
4. Change the width and height for each vision system window to divide the viewing area evenly between systems while fitting them all on the screen.
5. Save this in notepad as a '.html' file type.
6. Double click the file to launch a page in the default browser (see screen shot below)



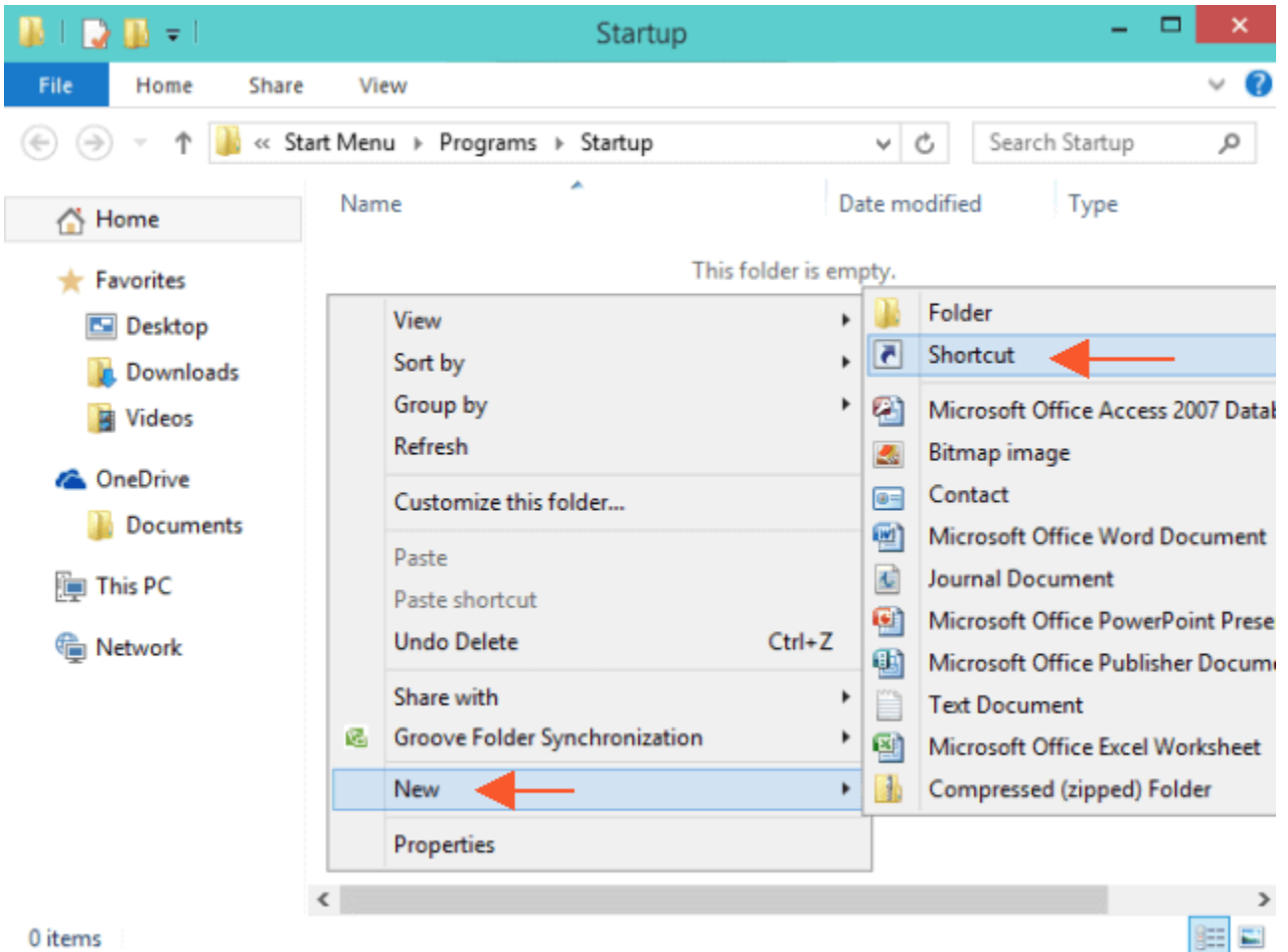
2.2 Load page at boot time:

Add browser to the PC start up page:

1. Bring the **Run** command dialog box into your computer screen by pressing **Windows** and **R**
2. Type **shell:startup** on the command field and click **Ok**.



3. The Startup folder for the logged in user account will come on the screen.
4. For the programs that you wish to run automatically at boot add their shortcuts to the Startup
5. To create a program shortcut right click on an empty area of the **Startup** folder and select **New** followed by **Shortcut**.



6. On the newly opened **Create Shortcut** window click on the **Browse** link and find the file that you wish to run automatically.
7. Provide a name to the shortcut created.
8. And click **Finish**.

- For the programs whose shortcuts are already created, you can shift them to the **Startup**
- In case you want to disable the created shortcuts than you can do from **Task Manager**.
- Or you can easily remove the shortcut from the **Startup**.


Add link to shortcut set as the default home screen.


If a customer wanted to have a screen with multiple camera views and independent views for each camera, create an html document for each camera, and add a link to each as a new tab as shown below.


In-Sight Integration Note: How To Tile HTTP WebHMI's

On startup

- ☐ Open the New Tab page
- ☐ Continue where you left off
- ☒ Open a specific page or set of pages

 file:///C:/Users/lhedtke/Desktop/InSight Web View.html
file:///C:/Users/lhedtke/Desktop/InSight%20Web%20View.html

 file:///C:/Users/lhedtke/Desktop/InSight Web View - Cam1.html
file:///C:/Users/lhedtke/Desktop/InSight%20Web%20View%20-%20Cam1.html

 file:///C:/Users/lhedtke/Desktop/InSight Web View - Cam2.html
file:///C:/Users/lhedtke/Desktop/InSight%20Web%20View%20-%20Cam2.html

[Add a new page](#)

[Use current pages](#)